

PRESSURE EQUALISING VALVE FOR DIFFERENTIATING PRESSURE GAUGES

BCA



SPECIAL FEATURES

- One-way, three-way, four-way and five-way valves
- Robust brass or stainless steel versions
- Valves for PN 100 and 400 with double-sided cone seals
- Nominal pressures to 40, 100 or 400 ber

DIMENSIONS – STANDARD VERSION

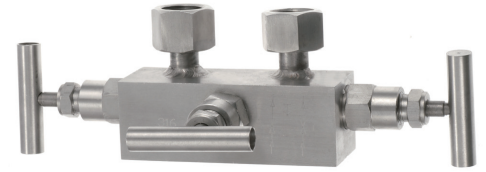
APPLICATIONS

- Shut-off, pressure equalising, purge and vent valves for differential pressure gauges, for measurement of liquids, gases and vapours
- In stainless steel version for aggressive media, also in aggressive environments
- Process industry: Machine building, general plant construction, chemical/petrochemical, power plants, mining, on-and offshore and environmental technology

SPECIFICATIONS

STANDARD VERSION: EC

Body	:	AISI 316 SS
Handle	:	AISI 316 SS
Working Temperature	:	-25°C~+250°C
Gasket seal	:	PTFE
Nominal pressure	:	100kg/cm ²



HOW TO ORDER

BASIC MODEL

BCA

TYPE

G8

G8 2WAY -SQUARE BAR G9 5WAY -ROUND BAR
 G10 3WAY -SQUARE BAR

BODY

AF1

AF1 CARBON STEEL
 AF2 AISI 304 SS
 AF3 AISI 316 SS

SIZE & END CONNECTION [INLET x OUTLET]

AG1

AG1 1/4"(FxF) AG2 1/2"(FxF)
 AG3 1/4"(MxF) AG4 1/2"(MxF)
 AG5 1/4"(MxM) AG6 1/2"(MxM)
 AG7 3/8"(FxF) AG10 1/2" x Flange
 AG8 3/8"(MxF)
 AG9 3/8"(MxM)

IN CASE OF 3 WAY GAUGE COCK, ONE CONNECTION WILL BE MALE & ANOTHER TWO WILL BE FEMALE
 EXAMPLE : AG4:1/2"(MxF)MEANS 1/2"(MxFxF)

THREAD TYPE

AH1

AH1 BSP
 AH2 NPT

OPTIONS

K5

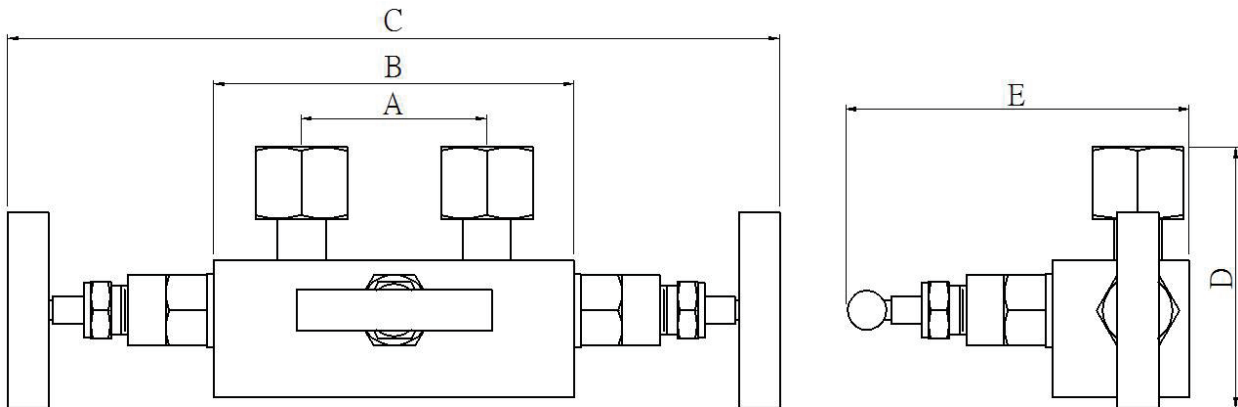
FOR NON STANDARD PRODUCTS/OPTIONAL ITEMS,PLEASE CONTACT FACTORY FOR DELIVERY AND MINIMUM QUANTITY OF ORDER.

K5 MATERIAL TEST CERTIFICATE
 K6 VENT HOLE

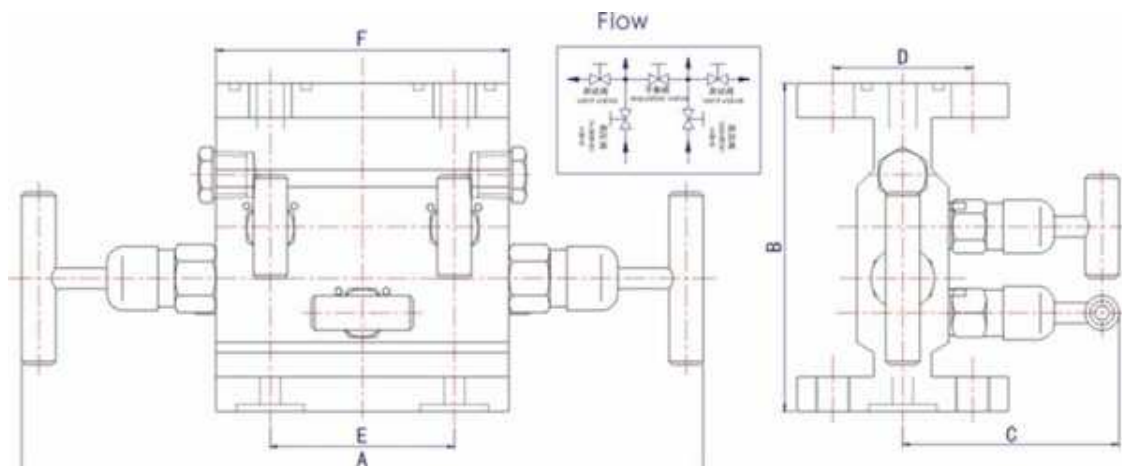
Ordering Example:

BCA-G8-AF1-AG1-AH1-K5

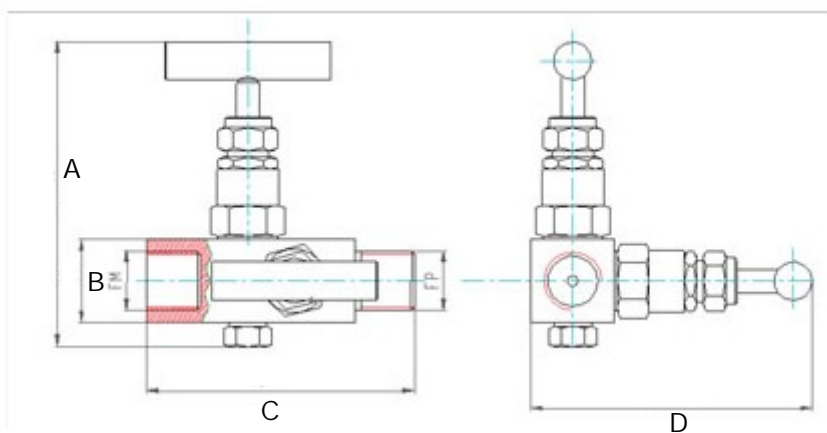
Notes: • Due to continuous improvement, the specification may vary from time to time.



A	B	C	D	E	Weight in gram (With Box)
54	105	221	76	100	1998.0



A	B	C	D	E	F
200	95	85	41.3	54	86



A	B	C	D
110	30	95	98