

# DIAPHRAGM SEAL

FLANGE-"1" SECTION TYPE



BBV



## SPECIAL FEATURES

- CONTINUOUS DUTY
- SECTION EXTENSION TO FACILITATE SMALLER FLANGED CONNECTION
- IDEAL FOR GENERAL PURPOSE APPLICATION
- IDEAL FOR GENERAL PURPOSE APPLICATION



## APPLICATIONS

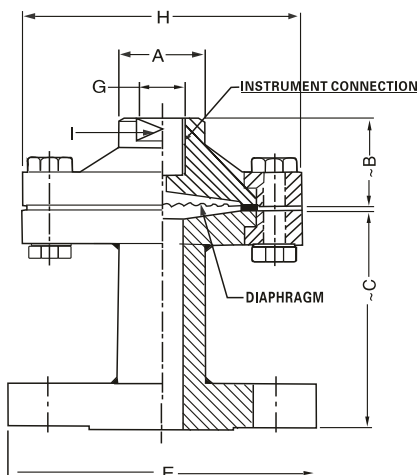
DIAPHRAGM SEALS ARE PROVIDED IN THE INSTRUMENTS LIKE PRESSURE GAUGES, SWITCHES, TRANSMITTERS IN ORDER TO ISOLATE THE SENSING ELEMENT FROM THE MAIN SERVICE DUE TO ITS CORROSIVE, VISCOUS AND SEDIMENTED NATURE AND TO AVOID CLOGGING AND SOLIDIFICATION. THIS CAN BE WIDELY USED WITH ANTI CORROSIVE TREATMENT/PROTECTION & VARIOUS FLANGED SIZES.

## SPECIFICATIONS

**STANDARD VERSION: (PREFERABLE FOR FLANGE SIZE 1/2"~2" AND BELOW)**

Range	:	-1 kg/cm <sup>2</sup> to 21 kg/cm <sup>2</sup>
Process Temperature	:	-40°C to 200°C or as per fill fluid
	:	-40°C to 345°C for without PTFE lined
Instrument Connection	:	3/8" BSP (F)
Process Connection	:	Flang (as per Din/BS/ANSI/JIS) Finish 125-250 AARH
Fill Fluid	:	Silicon Oil-DC200 upto -40 to 200°C

- Diaphragm : AISI 316L SS
- Top Chamber : AISI 304 SS
- "1" Section : AISI 316 SS Flange (as per DIN/BS/ANSI/JIS)
- (Bottom Chamber) :
- Fill Fluid :
- Gasket : Carbon Steel Nickel Plated
- Slip Ring : PTFE (upto -200°C)/Metal Seal (upto 350°C)
- (Tension Flange) : Steel chrome plated powder Coated



Ranges	A	~B	~C	E	H	G	I
-1 to 2.5 kg/cm <sup>2</sup>	30	31	75	*	90	3/8" BSP (F)	A/F 25
4 to 400 kg/cm <sup>2</sup>	30	31	75	*	60	3/8" BSP (F)	A/F 25

\*-as per standard flange table ANSI, DIN, BS, JIS ETC.,

Notes: . Drawings are not to scale. . All Dimensions are in mm.



**HOW TO ORDER  
BASIC MODEL**

**OPTIONS**

FOR NON STANDARD PRODUCTS/OPTIONAL ITEMS, PLEASE CONTACT FACTORY FOR DELIVERY AND MINIMUM QUANTITY OF ORDER.

**TOP CHAMBER**

- L1 AISI 316L SS                      L2 AISI 316 SS
- L3 AISI 304 SS                      L4 CARBON STEEL

**DIAPHRAGM**

- M8 PTFE                              M2 NICKEL                              M3 TITANIUM
- M4 HASTELLOY'C                      M5 SILVER                              M1 AISI 316L SS
- M6 MONEL'                              M7 TANTALUM

**GASKET**

- N3 METAL                              N4 PTFE

**TENSION FLANGE & NUT -BOLTS**

- AC1 AISI 304SS                              AC2 NICKEL PLATED MILD STEEL
- AC3 AISI 316L SS

**FLUSHING RING**

- S1 FLUSHING RING WITH 1/2"NPT PLUG (AISI 304 SS)                      S2 FLUSHING RING WITH 1/4"NPT PLUG(AIS 304 SS)
- S3 FLUSHING RING WITH 1/2" NPT PLUG (AISI 316SS)                      S4 FLUSHING RING WITH 1/4"NPT plug (AISI 316 SS)Std.

**BOTTOM CHAMBER(I SECTION)**

- P2 AISI 304 SS                      P3 CARBON STEEL                      P4 PVC                              P1 AISI 316 SS
- P5 AISI 316 SS                      P6 POLYPROPELENE                      P7 PVDF

**INSTRUMENT CONNECTION**

- Q1 1/2"BSP(F)                              Q5 3/8"BSP(F)
- Q2 1/4"NPT(F)                              Q7 1/2"NPT(F)
- Q3 1/4"BSP(F)                              Q6 3/8"NPT(F)

**PROCESS CONNECTION**

AS PER DIN /BS/ANSI/JIS(SELECT CODE FROM TABLE)

- T1 FLUROLUBE 4.2[-45 TO 175°C/-49 TO374 ° F]                      T2 SILICON DC 704 [0 TO 315°C/-32 TO599 ° F]
- T3 FLUROLUBE 6.3[-40 TO 235°C/-40 TO455 ° F]                      T4 SILICON DC 710 [5TO 345°C/-41 TO653 ° F]
- T5 FLUROLUBE FS5[-40 TO 150°C/-40 TO302 ° F]                      T6 SYLTHERM 800 [-45 TO205°C/-49 TO401° F]
- T7 FOOD GRADE OIL[-20 TO 140°C/-4 TO284 ° F]                      T8 SYLTHERM XLT [-75 TO150°C/-102TO302° F]
- T9 SILICON DC200-10CS[-40 TO 205°C/-40 TO401 ° F]                      T10 HALOCARBON OIL

**PROTECTION ON WETTED PARTS**

- U1 PTFE LINING ON BOTTOM CHAMBER(ISECTION)-3mm THICK                      U2 PTFE PROTECTION FOR DIAPHRAGM
- U3 PTFE COATING ON DIAPHRAGM

**TYPE**

- G1 WITHOUT CAPILLARY                      G2 WITH CAPILLARY

**CAPILLARY**

- H1 AISI 304 SS                              H2 AISI 316 SS

**CAPILLARY COVERED WITH ARMOUR**

- I1 AISI 304 SS                      I2 AISI 316 SS                      I3 PVC

**CAPILLARY LENGTH(Max up to 6Mtrs.)**

IN METERS (e.g. 1.5)=1.5METERS 2.0=2METERS)

**OTHER OPTIONS**

- K3 HELIUM LEAK TEST                      K4 DRY SEAL ONLY WITHOUT INSTRUMENT

**Ordering Example:**

**BBV-L1-M8-N3-AC1-S1-P2-Q1-B11-T1-U1-G1-H1-I1-3Mtr.-K3**

Note: ● Due to continuous improvement,the specification may vary from time to time.

BBV  
L1  
M8  
N3  
AC1  
S1  
P2  
Q1  
B11  
T1  
U1  
G1  
H1  
I1  
3Mtr.  
K3